



2009 / 2010 CATALOGUE

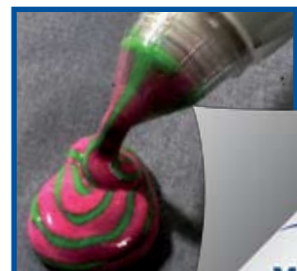


EuroChef



2009 / 2010 CATALOGUE


EuroChef
www.eurochefasia.com
www.matferbourgeat.com





EuroChef

How to contact us

EuroChef Worldwide is broken down into several key offices designed to offer you a personalised global service no matter your location. Please visit us online for more information.

www.eurochefasia.com

www.matferbourgeat.com



EuroChef Asia
Tel: +852 27535626
Fax: +852 27535690
Email: sales@eurochef.biz
Web : www.eurochefasia.com

9/F., Johnson Industrial Building,
340 Kwun Tong Road, Kwun Tong,
Kowloon
Hong Kong



EuroChef Australia
Tel: +61 (0) 2 83389222
Fax: +61 (0) 2 83389588
Email: eurochef@eurochefaus.com
Web : www.eurochefaus.com

Airgate 2
283 Coward street
Mascot
NSW 2020
Australia



EuroChef China
Tel: +86-10-64382431
Fax: + 86-10-64386432
Email: eurochef@public3.bta.net.cn
Web : www.eurochefasia.com

Room 2008, Galaxy Building
No. 10 Jiu Xian Qiao Road,
Chaoyang District,
Beijing 100016



EuroChef Malaysia
Tel: +60 (03) 62018863
Fax: +60 (03) 62014057
Email: sales@eurochef.com.my
Web : www.eurochefasia.com

Unit P-I-21, block P, Plaza Damas,
No. 60 Jalan Sri Hartamas I
Sri Hartamas, 50480
Kuala Lumpur



EuroChef Projects
Tel: +60 (03) 62018863
Fax: +60 (03) 62014057
Email: projects@eurochef.com.my
Web : www.eurochefasia.com

Unit P-I-21, block P, Plaza Damas,
No. 60 Jalan Sri Hartamas I
Sri Hartamas, 50480
Kuala Lumpur

For customers in Europe, Africa and Latin and North America, please contact us, and we shall refer you to the correct MATFER-BOURGEAT Hotel Supplies office. The MATFER-BOURGEAT Group is a global company with offices all over the world.



Our thanks to Director of Food and Beverage, Matthias Schumm

To contact Matthias, please email: matthias.schumm@marriott.com

Matthias Schumm worked as a chef in various hotels and restaurants in his homeland – Austria - as well as Switzerland, Holland and England before moving to Asia in 1995.

He spent three years at the Shangri-la Rasa Sayang Hotel & Resort in Penang before moving to the Peninsula Hotel Beijing. His next move, as Executive Chef, was with the Marriott group to open the JW Marriott Hotel in Mumbai, a challenging experience of providing 65,000 covers a month. He must have done a great job as the group then asked him to open the JW Marriott Shanghai.

Matthias moved into F&B operations with his next Marriott property, the Sanya Marriott Resort & Spa on Hainan Island. After three years there, Matthias moved to Indonesia, as Director of Food and Beverage at the JW Marriott Medan which opened in December 2008. Matthias enjoys the daily challenge of always having to be creative and moving with the times.

China holds special meaning for Matthias as that is where he met and married his wife, Mary. They have one daughter, Sophia.

Photos of Matthias Schumm by Darwin Wu of WIN & CO

Produced and Designed by SOB